

NEW

Camera and Lighting Systems



SYNMC
LightCam



SYNCLightCam and SYNCCam for vid

Experience walking analysis in a new light. The new SYNCLightCam combines high-intensity LEDs with a high-speed camera (up to 120 FPS) in a compact unit. Video and force data are automatically synchronized during a walking analysis. The light intensity is infinitely controllable.

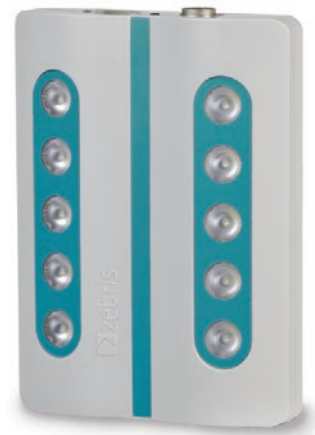


Video analysis and documentation

The system is available with a customized stand that has built-in tubing to hide the power and connection cables. This stand is offered with and without wheels. Several SYNCLightCams can be operated and synchronized simultaneously to make sure you capture your data from any angle.



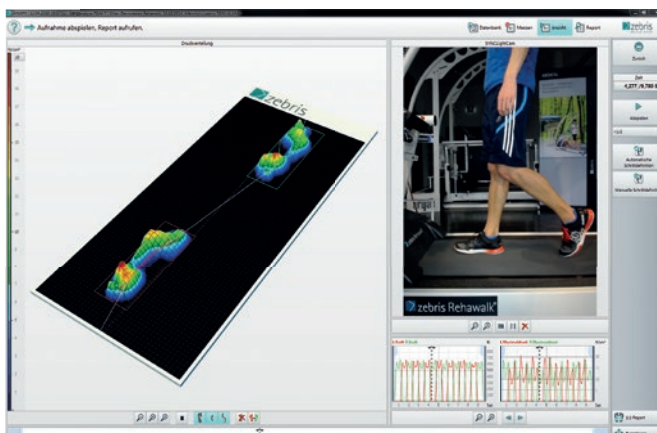
When there is a need to customize the placement of the camera or light for your specific application, the SYNCCam and SYNC-Light are available as stand-alone options. Automatic synchronization of the video and force data, from treadmills or measuring platforms, is standard.



Designed for quick and easy assembly with ultimate flexibility, our SYNCLight-Cam, SYNCLight and SYNCCam have a quick-detach feature to the zebriS stands and a standard thread attachment for other commercial tripods.



The projection of the video footage takes place in the zebriS FDM software. Through a short SYNC-impulse the image data from the camera is accurately matched with the force data from the pressure distribution matrix.



Technical data



| | SYNCLightCam HS | SYNCLightCam | SYNCCam | SYNCLight |
|--------------------------------|---|--|--|-----------------------------------|
| Dimensions approx. (W x H x D) | 220 x 183 x 80 mm | 220 x 183 x 80 mm | 110 x 125 x 50 mm | 155 x 210 x 38 mm |
| Weight approx. | 800 g | 800 g | 190 g | 640 g |
| Power supply unit | cable power adapter | cable power adapter | | cable power adapter |
| Fixation | 1/4 " internal thread back | 1/4 " internal thread back | 2 x 1/4 " internal thread below / back | 1/4 " internal thread back |
| Camera | High Speed | HD | HD | |
| PC interface | USB 3 | USB 2 | USB 2 | |
| Synchronisation | Sync-In | Sync-LED | Sync-LED | on / off |
| Frame rate / Resolution | 120 Hz / 800 x 600 100 Hz / 960 x 720 60 Hz / 1280 x 960 30 Hz / 1600 x 1200 | 30 Hz / 800 x 600 " 960 x 720 " 1280 x 720 " 1600 x 896 | 30 Hz / 800 x 600 " 960 x 720 " 1280 x 720 " 1600 x 896 | |
| Color temperature | LED – 6200 K | LED – 6200 K | | LED – 6200 K |
| Light intensity | 1550 lumen infinitely variable | 1550 lumen infinitely variable | | 1550 lumen infinitely variable |

Characteristics

